

PET App



www.aainternational.co.uk



KEY FEATURES

CUSTOMISE ASSEMENTS

Covers crops, livestock and forage species across East Africa and beyond

USE OFFLINE WHILE IN THE FIELD

Data stored safely on phones/tablets, for syncing to PET server

KEY METRICS DASHBOARD**

Data can be viewed and downloaded from the server via the PET dashboard

DATA ANALYSIS & REPORTING**

Full data analysis and report services available. Packages tailored by numbers of devices and reporting requirements

SELECT LEVEL OF ANALYSIS**

Analysis by field, farmer and/or over a selected area

PET TRAINING**

Tailored training packages available, by our partner NGO **AgriTechTalk Africa**

* Currently for Android devices

** Via subscription/project funding



info@aainternational.co.uk

Tel: +441970 639468

A MOBILE APP FOR RAPID DIGITAL DATA COLLECTION OF CROP, FORAGE AND LIVESTOCK OUTPUT, BY FIELD OFFICERS & FARMERS

By enabling rapid quantified estimates of crop/forage yield, and livestock body condition score data directly from the field, PET data can be used by Governments, Agencies, NGOs, Researchers, EO Modellers, Farmers and Food Suppliers for:

- Food Security Assessments
- Early Warning Reporting
- Project/Programme Monitoring & Evaluation
- GPS-located ground truth estimates
- Crop production estimates at farm level



Allows field assessors to rapidly estimate, and digitally record, quantified crop yield, forage yield or livestock body condition score data



Data are sent to a central server for storage and analysis. Built in GPS functionality



Customized data analysis and reports available



Optimizes the Pictorial Evaluation Tool (PET) approach, established in 2004 with FAO funding (has supported food security assessments in Ethiopia, Kenya, Somalia, South Sudan, Sudan). PET data are approved by for integration into IPC food insecurity classifications



www.aainternational.co.uk

AA International Ltd, Harbour House, Y Lanfa, Aberystwyth, Ceredigion, SY23 1AS, UK

PET Livestock

Collect data on Body Condition Score digitally



www.aainternational.co.uk

PET LIVESTOCK - FEATURES

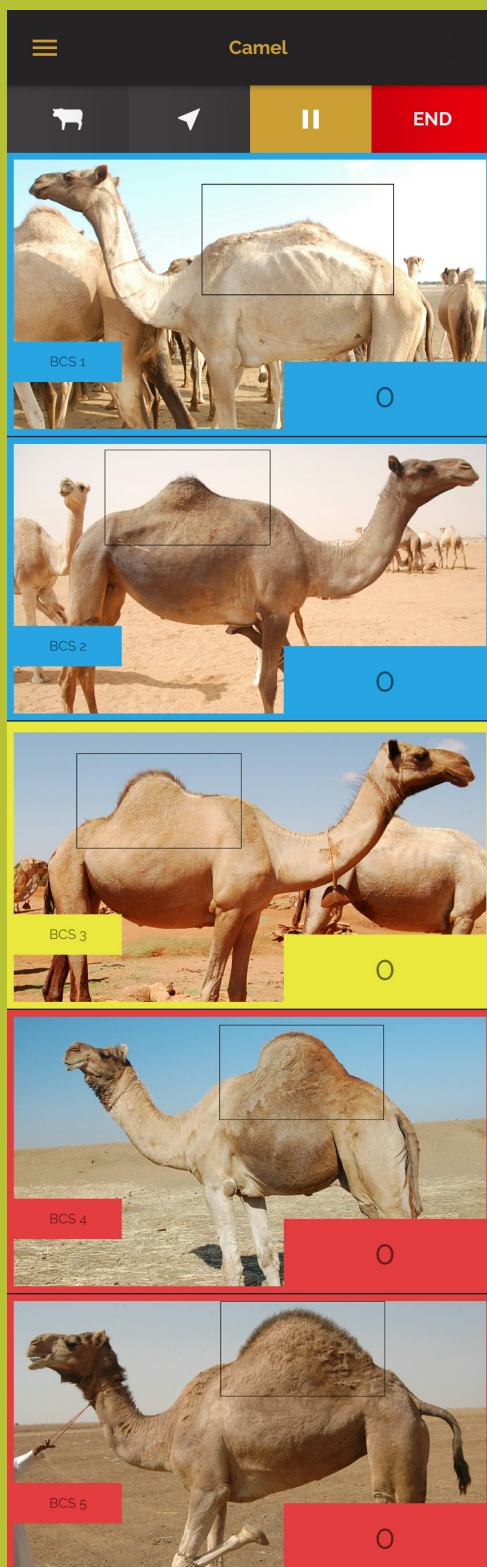
PET Livestock allows rapid digital collection of quantified livestock Body Condition Scores data using a scale of 1 to 5. Using the photo-indicators presented on the app, the assessor observes, matches and scores a single site on animals' bodies.

The detail and speed of data collection can be chosen: Driving transects enable rapid data collection of mode scores of herds. Walking or hybrid transects allow individual animal body scores to be recorded. Walking transects include more photo-indicators per BCS, enhancing score accuracy; and enable data on livestock class, overall health and management system to be collected.

PET's photo-indicators have been collected from several countries across East Africa and include: camels, cattle, long-tailed sheep, fat-tailed sheep and goats.

Other livestock types can be added in the future, depending on an organisation's individual requirements.

During transect set-up, location dropdowns enable easier geographic analysis. GPS coordinates can be collected at the beginning, end and during transects as required.



Livestock Driving Transect



Livestock Walking Transect



www.aainternational.co.uk

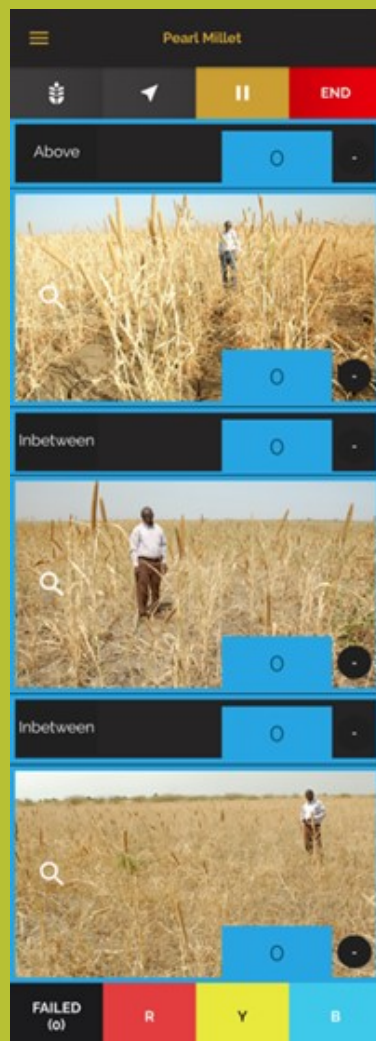
AA International Ltd, Harbour House, Y Lanfa, Aberystwyth, Ceredigion, SY23 1AS, UK

PET Crops & PET Forage

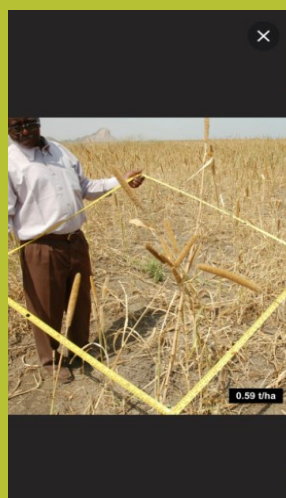
Collect estimated yield data, for crops and forage at harvest, digitally



www.aainternational.co.uk



Crops Walking Transect



PET CROPS & PET FORAGE - FEATURES

PET Crops and PET Forage allow the digital collection of dry yield estimates of standing crops and forage at harvest. Using the photo-indicators on the app, the assessor observes, matches and scores fields/pastures.

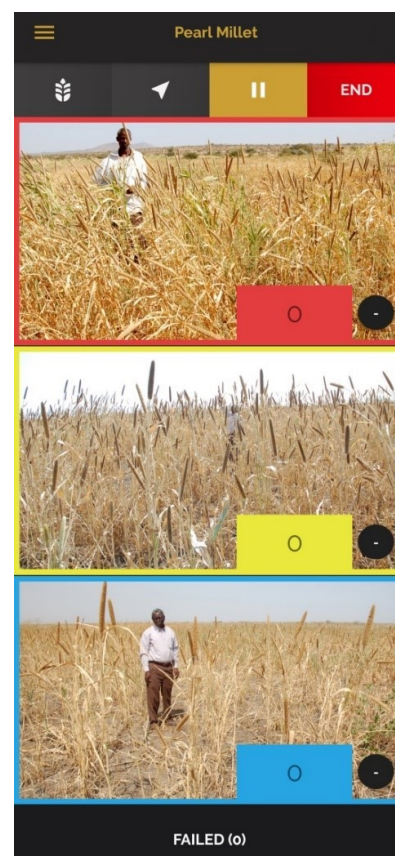
The detail and speed of data collection can be chosen: Walking transects include more photo-indicators and yield factors, enabling more accurate yield estimates. Driving transects enable more rapid data collection.

The PET photo-indicators have been collected from several countries across East Africa. Crops include: maize, sorghum, finger millet, pearl millet, sunflowers, wheat, barley, teff, rice and groundnuts.

Individual forage species include: star grass, alet grass, thatching grass, maize stover and sorghum stover. Annual, perennial and mixed grass yields can also be estimated.

Other crops and forage species can be added to the app in the future, depending on an organisation's individual requirements.

During transect set-up, location dropdowns enable easier geographic analysis. GPS coordinates can be collected at the beginning, end and during transects as required.



Crops Driving Transect



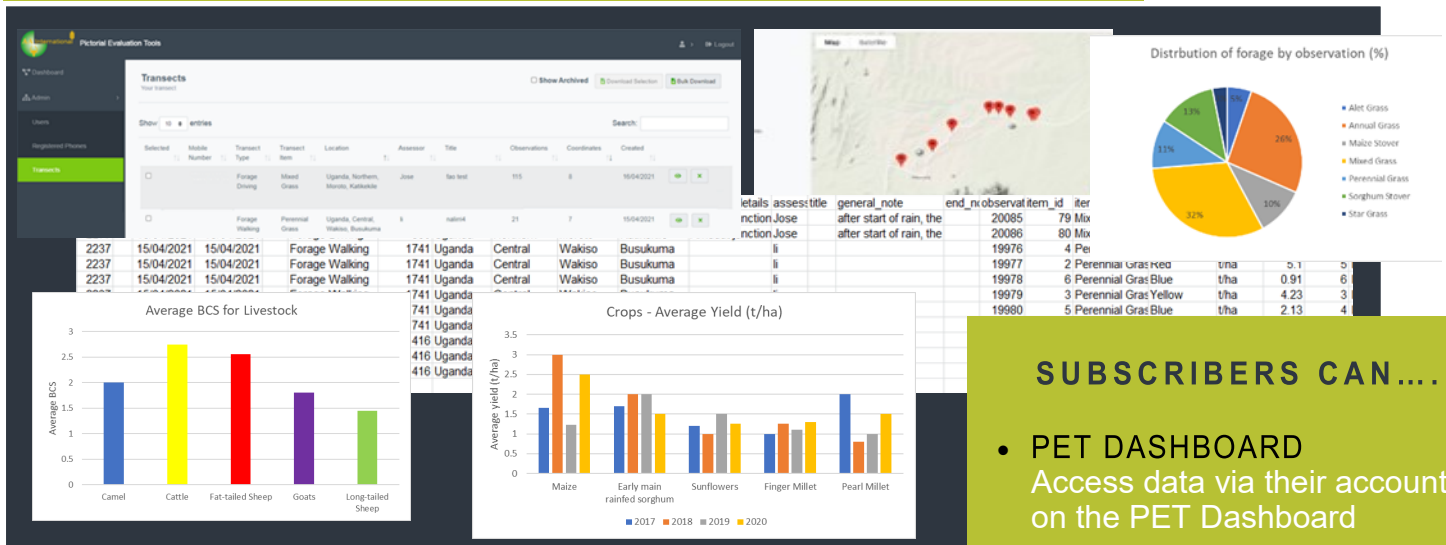
www.aainternational.co.uk

AA International Ltd, Harbour House, Y Lanfa, Aberystwyth, Ceredigion, SY23 1AS, UK

Analysis and reporting



www.aainternational.co.uk



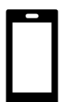
REPORTING PET DATA

We have a range of subscription packages available (determined by numbers of devices), which allow users to view and download their data (.csv file) from our online PET dashboard, for further analysis.

AA International also offers a customized data analysis and reporting service.

Please contact us for details of subscription packages and services info@aainternational.co.uk

START USING THE APP



DOWNLOAD THE APP - to register your interest and download the app for a free trial, please contact us directly



IF YOU CHOOSE TO SUBSCRIBE - a unique data account will be set up for your project/organisation. Officers' phone numbers are allocated to the account, so that data will feed in automatically



DATA COLLECTION STARTS - officers can collect data offline and sync it to the server when they have internet access



DATA REVIEW AND ANALYSIS - data can be viewed and downloaded, for analysis and reporting

SUBSCRIBERS CAN...

- **PET DASHBOARD**
Access data via their account on the PET Dashboard
- **SUMMARY OF TRANSECTS**
View details of transects, such as date, location and assessor name
- **VIEW AND DOWNLOAD TRANSECT DATA**
View and download all transect data (.csv file)
- **VIEW MAP OF TRANSECT**
View maps displaying GPS points collected during each transect
- **MANAGE ASSESSORS AND DEVICES**
Add and manage which assessors and devices (phones and tablets) are linked to their account



info@aainternational.co.uk

Tel: +441970 639468



www.aainternational.co.uk

AA International Ltd, Harbour House, Y Lanfa, Aberystwyth, Ceredigion, SY23 1AS, UK